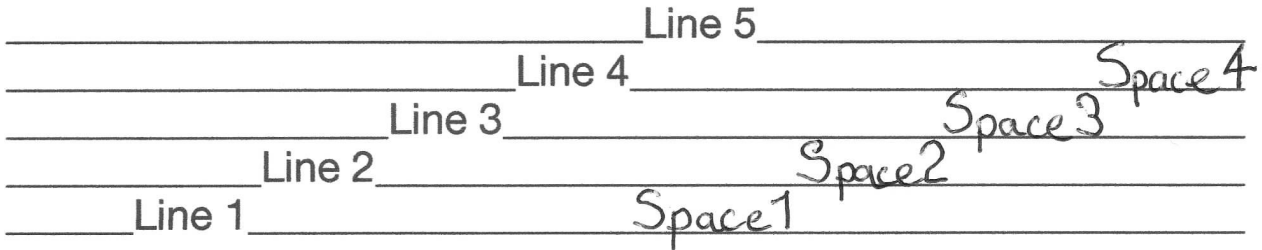


## GRADE 1 (Primary)

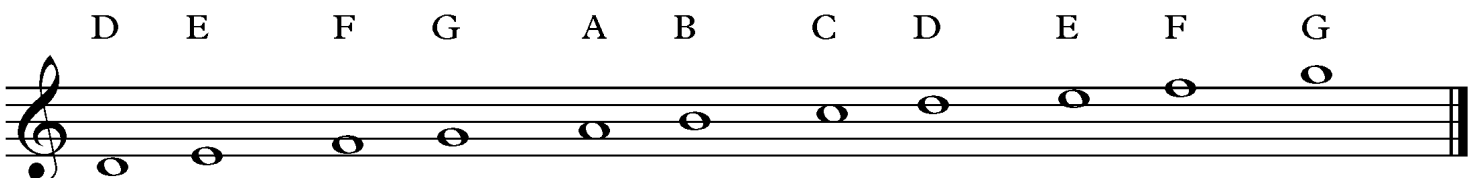
1. **Musical Sounds** are named from the first seven letters of the alphabet; **A-B-C-D-E-F-G**, these seven letters are repeated at higher or lower levels or **pitch**, which describes how high or low a musical sound is.
2. These musical letters or notes are written on a **Staff** that consists of five parallel lines and four spaces. Notes can be written on the lines or between the spaces;



3. Notes cannot be named on this **Staff** until a distinguishing mark is placed at the beginning, this mark is called a **Clef**. There are many different **Musical Clefs** and the one that we are going to look at first is the **Treble Clef** also known as the **G Clef**. The **Treble Clef** circles around **Line 2** of the staff and fixes **Line 2** as the note **G**.



4. We will now place all the notes on the **Treble Staff** with the inclusion of two extra notes, one that sits below **Line 1** and is technically in a space, **Note D**. the second one sits above **Line 5** and again is technically in a space, **Note G**.



## GRADE 1 (Primary)

### Short form Recap.

**Musical sounds** are named after the first seven letters off the alphabet;

**A-B-C-D-E-F-G**

These are repeated at higher or lower pitches of musical sound.

These musical sounds are written on a **Staff**, five parallel lines, numbered from the bottom 1 to 5 and four spaces numbered from the bottom 1 to 4. **Musical Notes** can be written on the **Lines** or in the **Spaces**.

These musical notes can only be determined,(named) once a sign called a **Clef** has been placed at the beginning. The first one we are concentrating on is the **Treble Clef**. This fixes **Line 2** inside the circle of the **Treble Clef** and forever naming **Line 2** as the **Musical Note G**. All other notes are now taken from this point.

There are notes that exist outside of the **Staff** and for now we will be looking at the two that sit directly outside the bottom and the top, **Musical Notes D & G**.